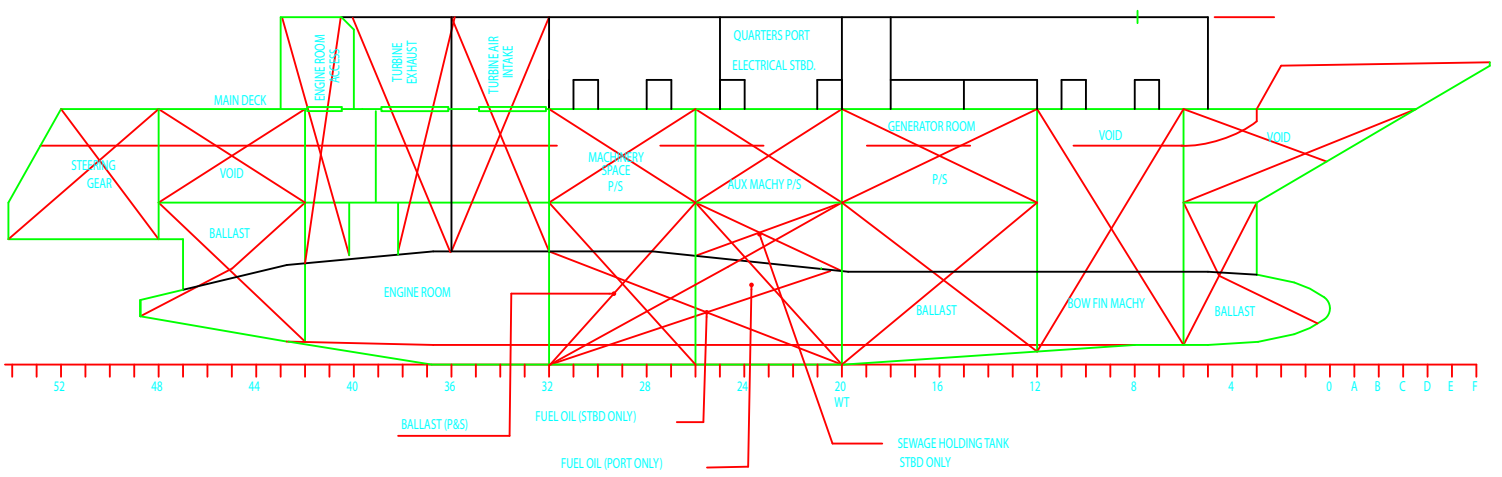


REVISIONS	
NO.	DESCRIPTION



**PROFILE THROUGH HAUNCH, STRUT & PONTOON**

**SUMMARY OF TANK CAPACITIES**

TANK	GALS.	SPGR.	WT. (LBS)	WCC (FEET)	FSM (FEET)	LCG	TCG
Ballast 1 Tank, S	1075	1.025	754	5.30	3.7	7.87	16.90
Ballast 1 Tank, P	1075	1.025	754	5.30	3.7	7.87	16.90
Ballast 2 Tank, S	1525	1.025	1051	6.95	3.6	11.76	18.91
Ballast 2 Tank, P	1525	1.025	1051	6.95	3.6	11.76	18.91
Ballast 3 Tank, S	2650	1.025	1932	13.52	5.81	32.19	18.71
Ballast 3 Tank, P	2650	1.025	1932	13.52	5.81	32.19	18.71
Ballast 4 Tank, S	1025	1.025	731	2.12	2.6	6.99	16.90
Ballast 4 Tank, P	1025	1.025	731	2.12	2.6	6.99	16.90
Fuel Oil Tank, S	4750	1.025	3467	4.22	21.6	29.96	18.90
Fuel Oil Tank, P	4750	1.025	3467	4.22	21.6	29.96	18.90
Raw Water Tank	445	1.000	325	19.13	0.6	14.15	0.00
Waste Water Tank	445	1.000	325	19.13	0.6	14.15	0.00

TRECO MARINE OPERATORS, INC.  
 ALAN C. MCCLURE ASSOCIATES, INC.  
 200 PINEAPPLE DRIVE  
 CHARLOTTE, NC 28203  
 TEL: 704.531.1111  
 FAX: 704.531.1112  
 WWW: WWW.TRECO.COM